

St. Lucie County Criminal Justice System

Detention Center Population Report

For Year: 2011



Prepared for the

Public Safety Coordinating Council

2300 Virginia Avenue
Ft. Pierce, FL. 34982

By

The Office of the Criminal Justice Coordinator
Mark Godwin

Purpose

The Detention process in St. Lucie County is a complex operation, Laws, court decisions, Federal and State rules, accreditation standards and the U.S. Constitution all combine to provide operational mandates.

To assist in this responsibility, the office of the Criminal Justice Coordinator has established an ongoing review and assessment of the volumes of statistical data the sheriff's office maintains.

This material offers a road map of sorts, sharing complied information to assist in the operational planning for the future.

The Criminal Justice Coordinator will continue to monitor the jail population to keep you informed of any significant trends or changes in the underlying population.

This report contains specific, detailed information regarding the incarcerated population of the St. Lucie County Detention Center.

Table of Contents

A. Methodology.....	4
B. Annual Population Summary.....	5
C. Inmate Booking Summary.....	7
• Historical Profile	
• Top 10 Arrests Categories	
• By Arresting Agency	
D. Inmate Release Summary.....	10
• Historical Profile	
• By Release Type	
• Average Length of Stay by Release Type	
E. Miscellaneous Population Statistics.....	13
• Average Number of Sentenced Inmates	
• Inmates Housed Over 365 Days	
F. VOP Analysis.....	15
• Felony v Misdemeanor	
G. Average Length of Stay Analysis.....	16
H. Inmates by Charge Status.....	17
I. Inmates by Offense Type.....	18
J. Gender Profile	19
K. Age Profile.....	20
L. Race Profile.....	21
M. Court Performance Metrics.....	22

Methodology

This is the 2011 edition of the St. Lucie County Jail System Annual Population Report. The report contains statistics for the year 2011 with some analysis dating back to 1995.

Most of the data for the statistics come from 3 sources.

- 1: Daily population report
- 2: Data entered into the Sheriff's Office computer jail inmate tracking system
- 3: Data extracts from St. Lucie County Circuit Court database

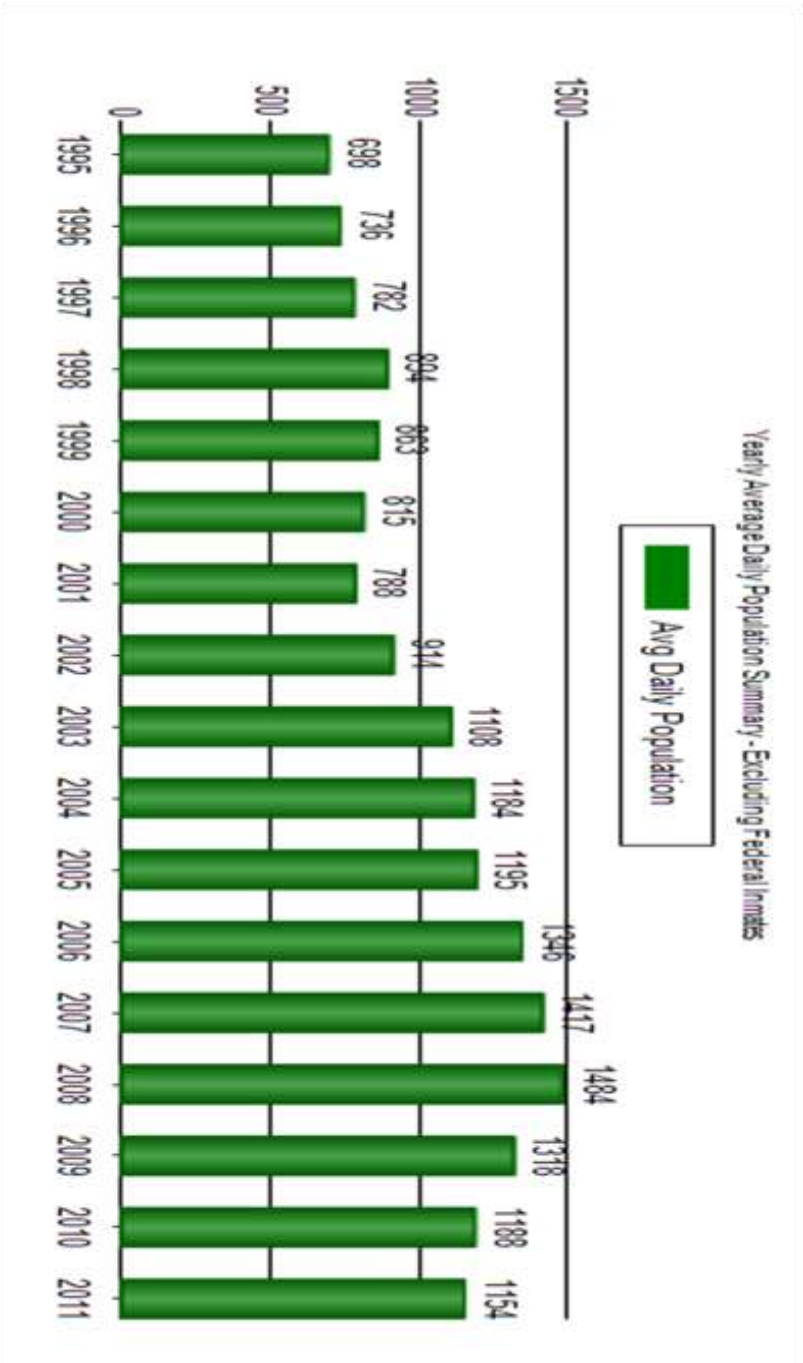
For the jail population, all of the statistics presented here are based on actual counts rather than on sampling, thus eliminating sampling errors.

A **booking** is the admission of a new inmate into the jail. If an inmate is fully released and then comes back to jail, that counts as a new booking. Hence when the number of bookings is given for a year, the same inmate will be counted as many times as he/she is booked. An inmate may similarly be **released** several times in a given period.

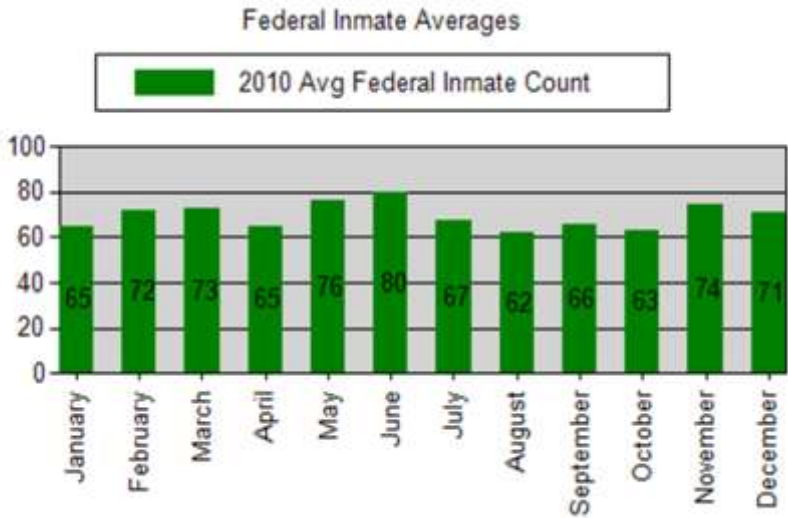
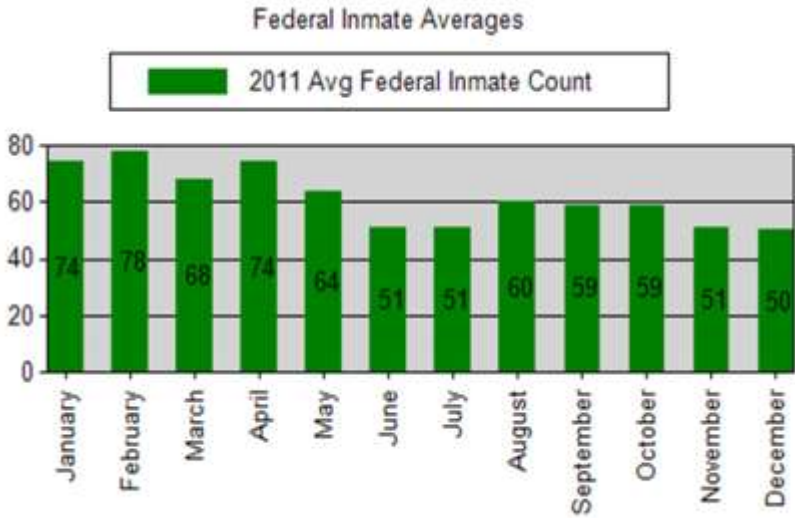
A daily population count records every inmate in jail exactly once at the time of the count. An inmate count is conducted every day at midnight and it is used as the official figure for the number of inmates in jail on the preceding day.

Two conventions employed in this report involving inmates with multiple charges should be noted. One is that, when citing statistics about inmate charges, the most serious charge is used. The other is that inmates with multiple charges are counted as sentenced if, and only if, they are sentenced on every charge.

Population Summary



Monthly Population—Federal Inmates



Yearly Total Booking Summary



Monthly Total Booking Summary

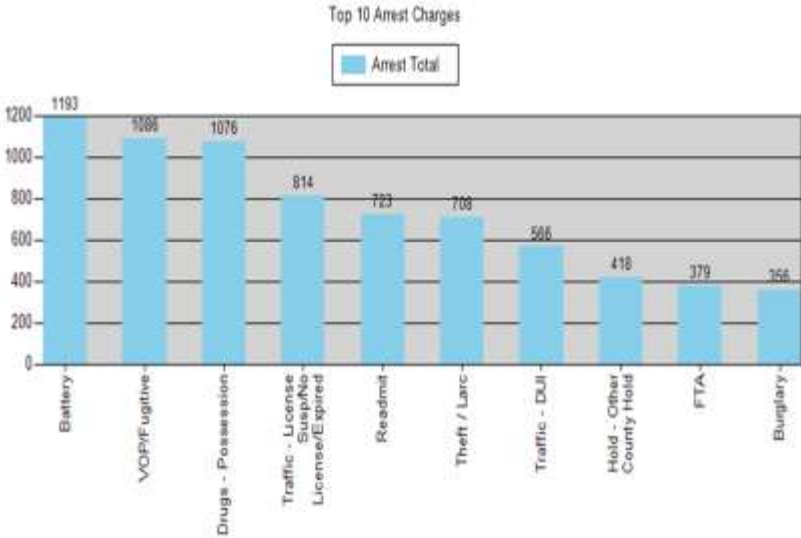


Monthly Total Booking Summary



Booking Profile 2011

The chart below outlines the top 10 charge arrest categories for the year.



Note: The 'Drugs—Possession' category excludes the categories—

1. Cultivation
2. Distribution
3. Manufacture/Smuggling
4. Sell/Delivery
5. Trafficking

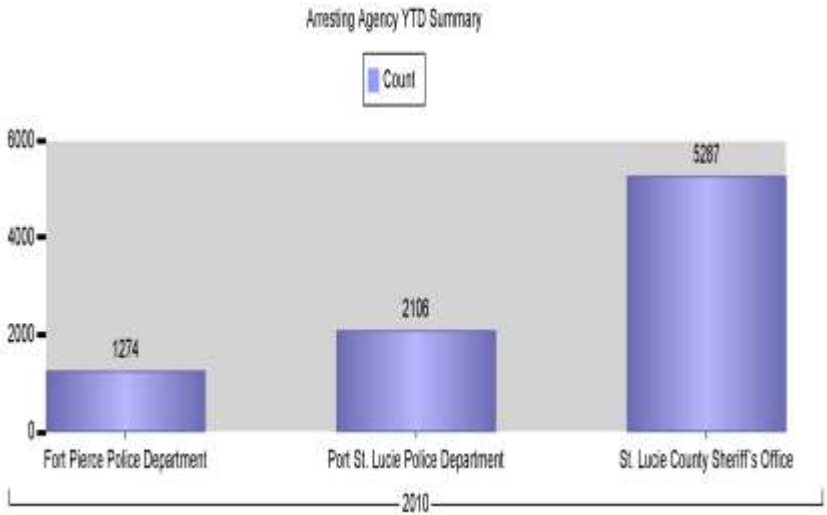
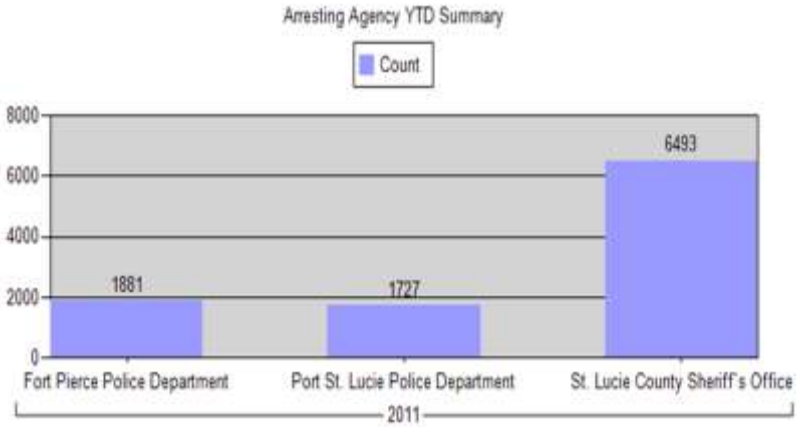
Which comprise an additional 272 arrests for 211.

Note: The 'Hold —Other County' category excludes the categories—

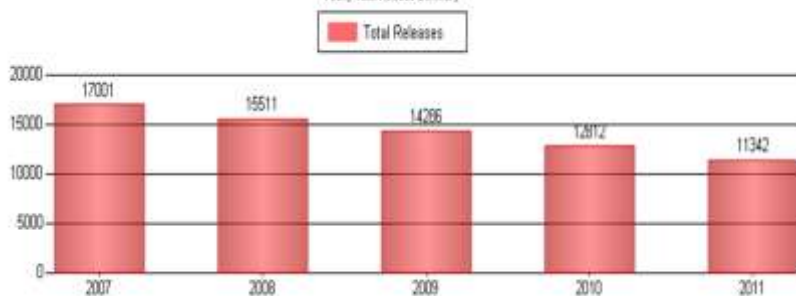
1. Hold - DJJ
2. Hold - Doc Court Order
3. Hold - I.C.E.
4. Hold - Out of State Fugitive
5. Hold - PSL Hospital/Mental Health Dept

Which comprise an additional 376 arrests for 211.

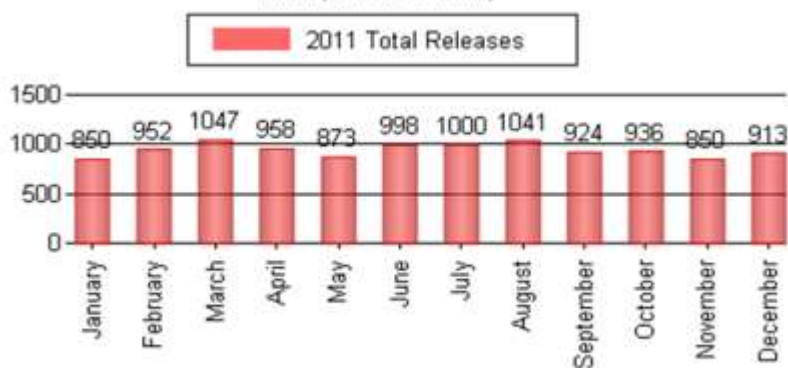
Booking Profile
By Arresting Agency
2010/2011



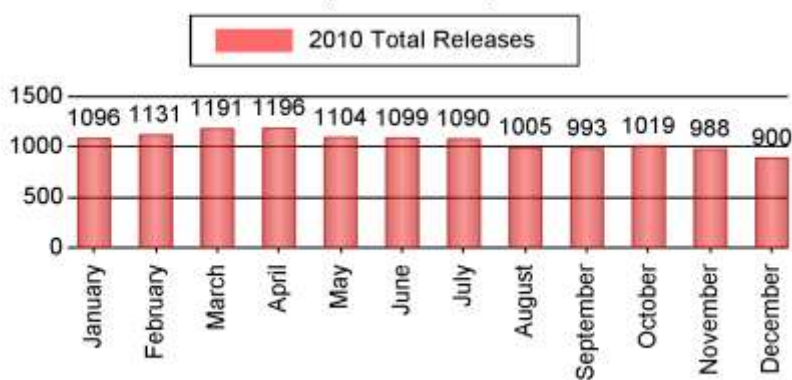
Yearly Total Release Summary



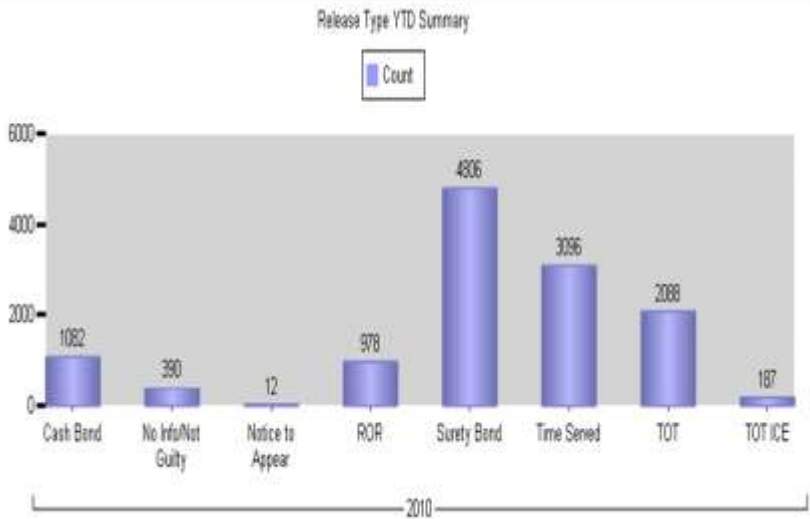
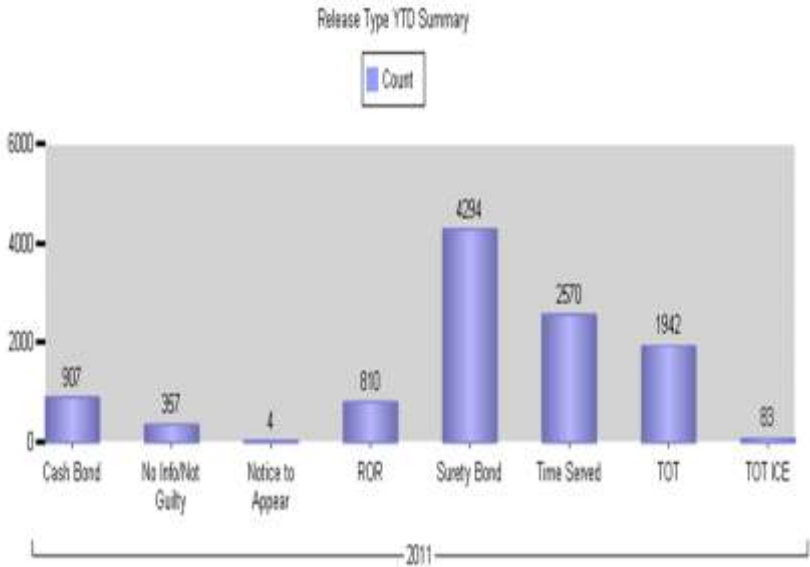
Monthly Release Summary



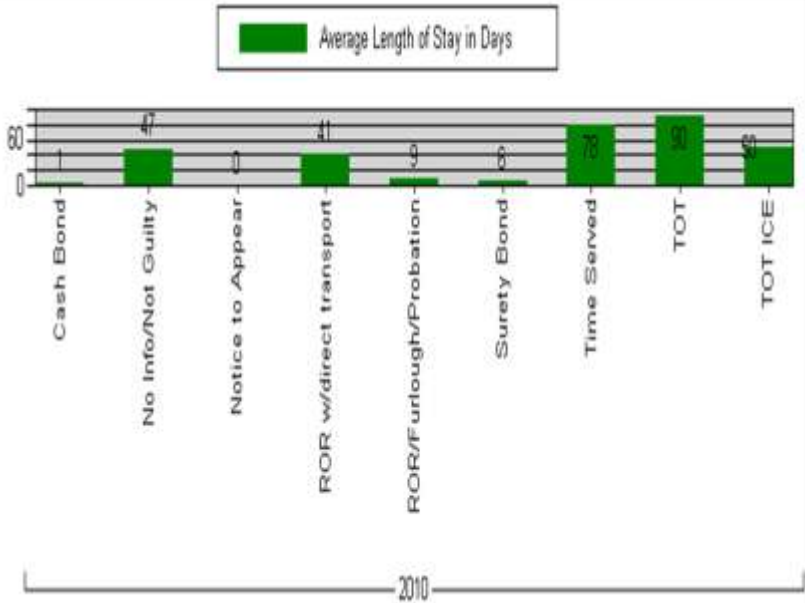
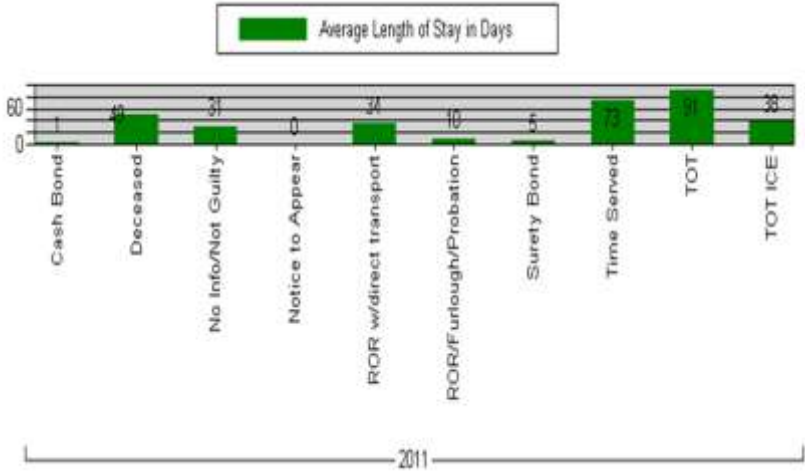
Monthly Release Summary



Release Type Summary

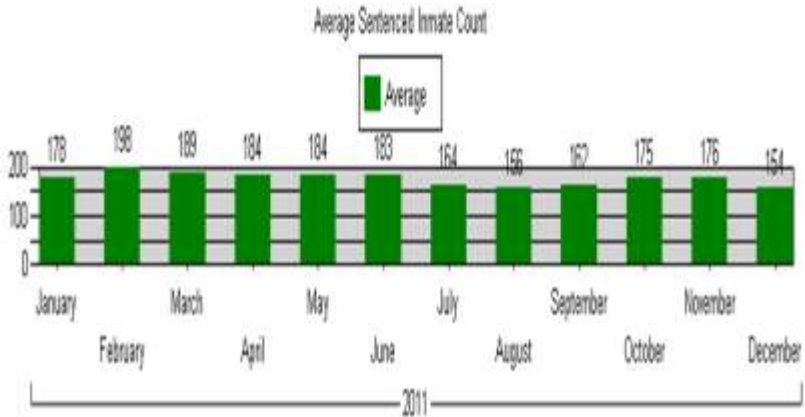


Average length of stay by release type

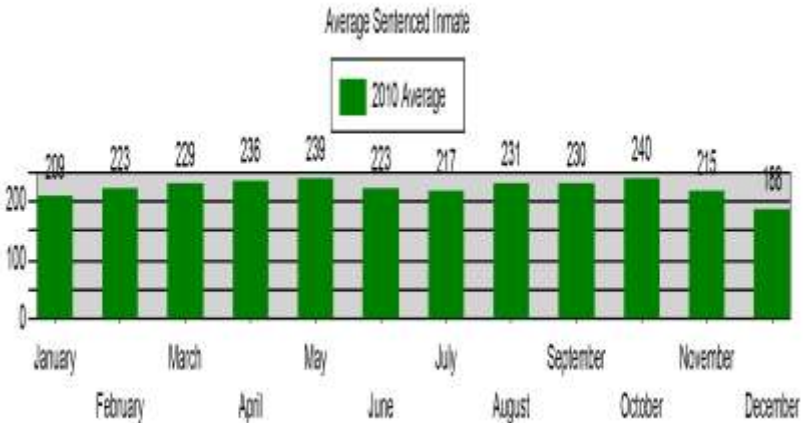


Miscellaneous Detention Center Statistics

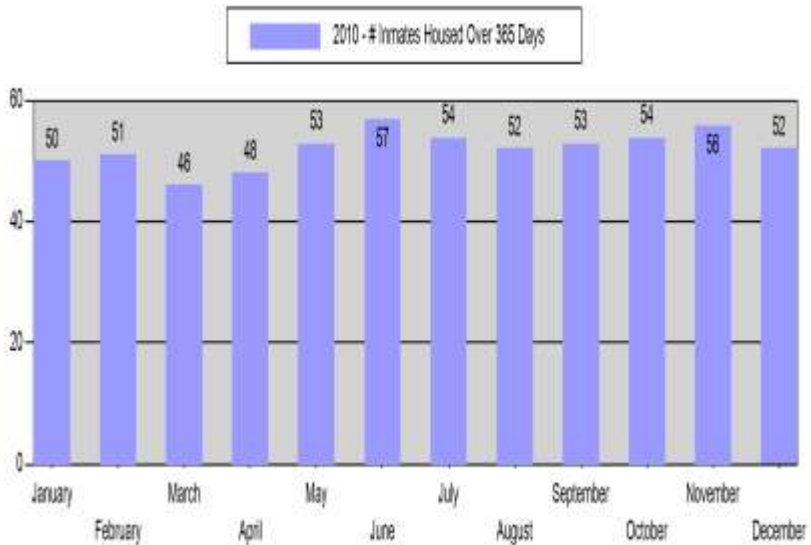
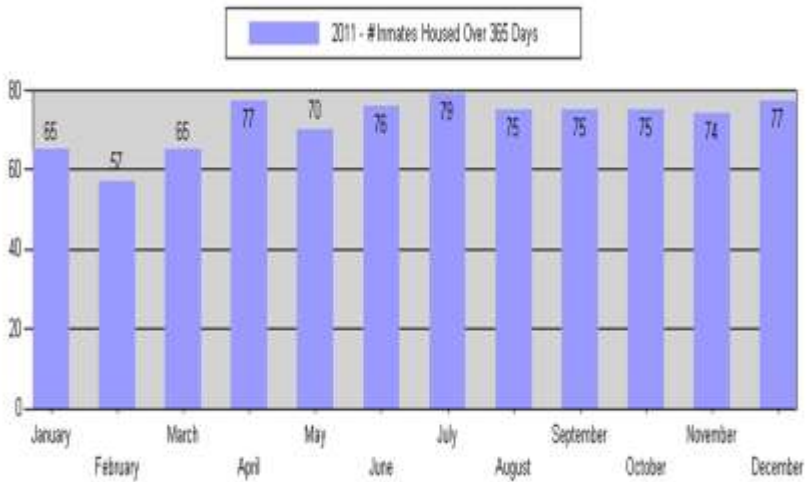
Average number of sentenced inmates during 2011
Cumulative yearly average = 175 inmates



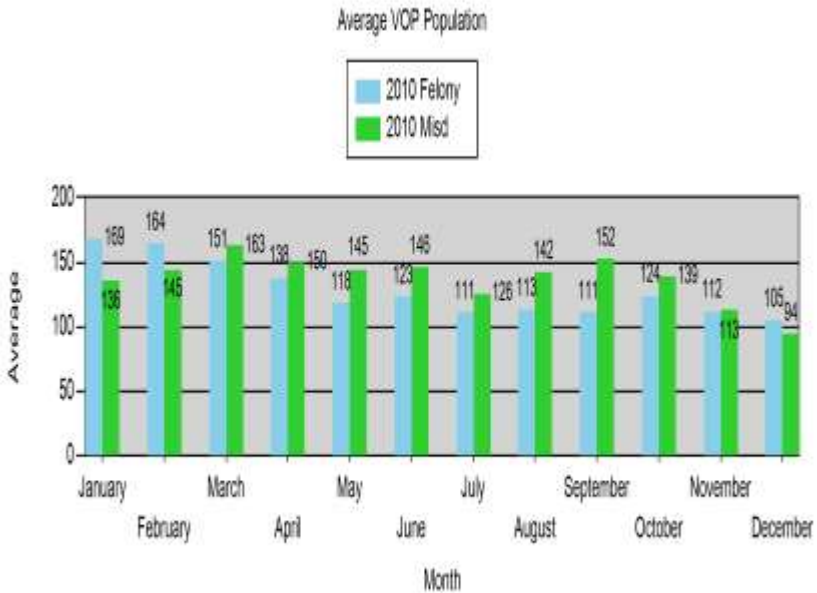
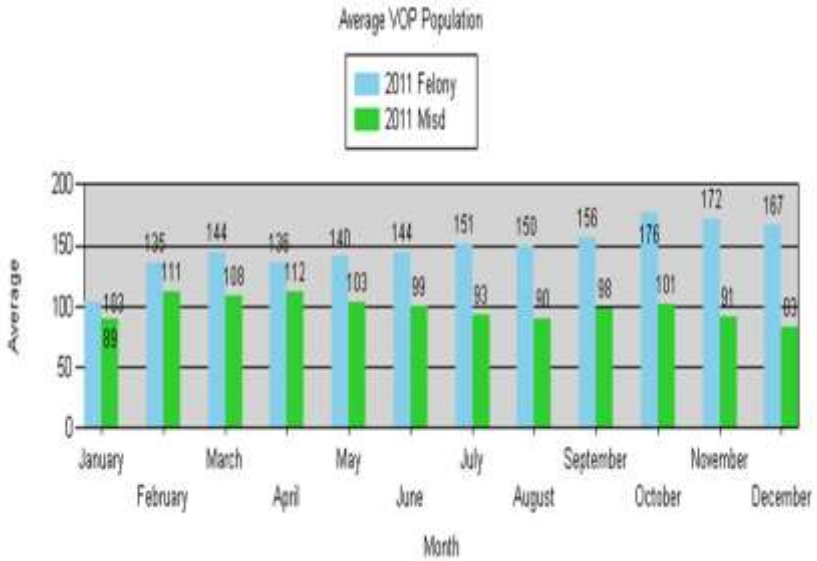
Average number of sentenced inmates during 2010
Cumulative yearly average = 223 inmates



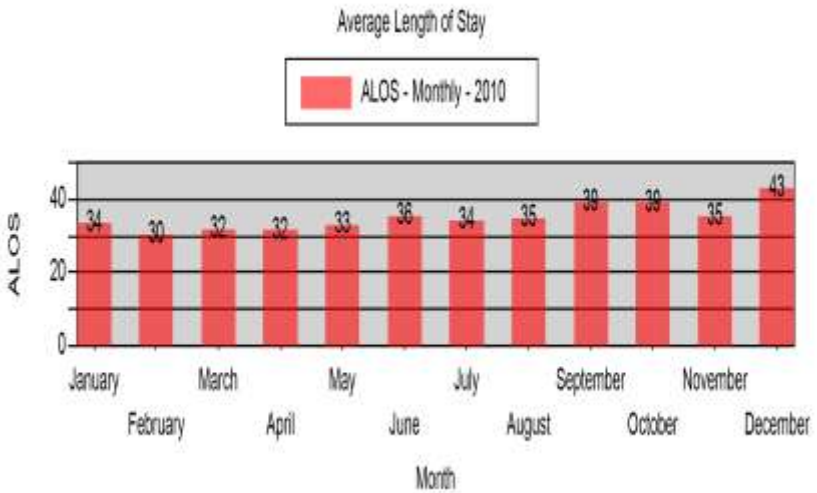
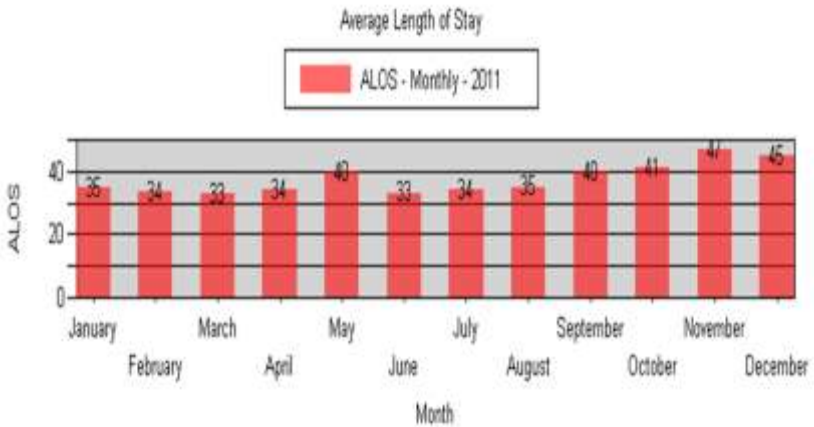
Miscellaneous Detention Center Statistics



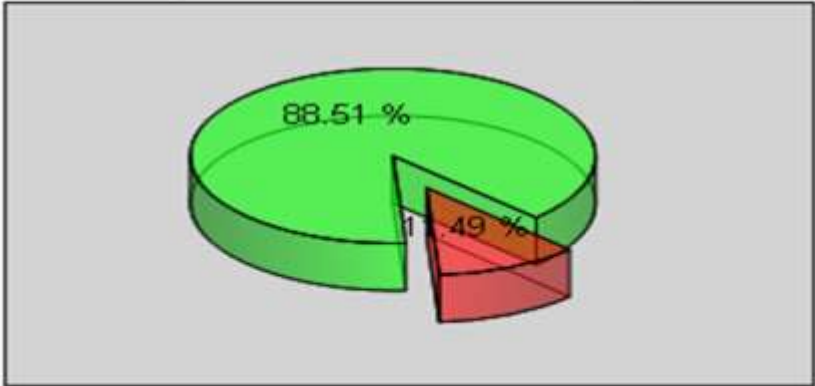
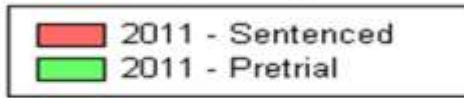
Violation of Probation Analysis



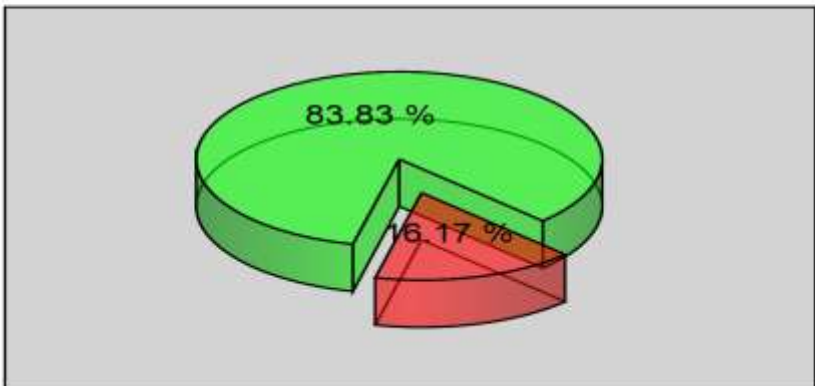
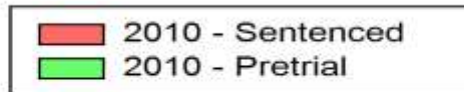
Average Length of Stay Analysis



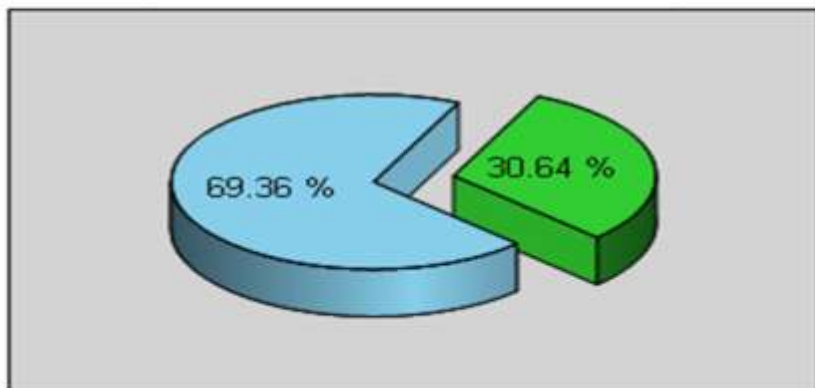
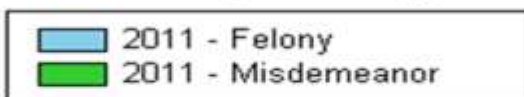
Inmates by Charge Status



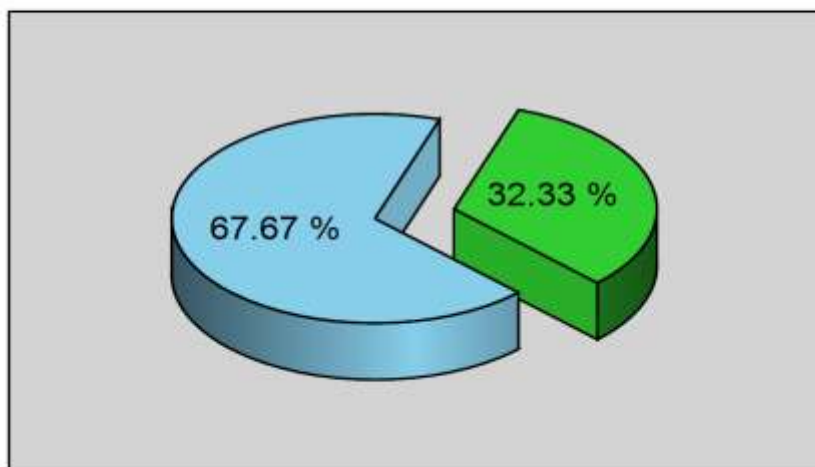
Inmates by Charge Status



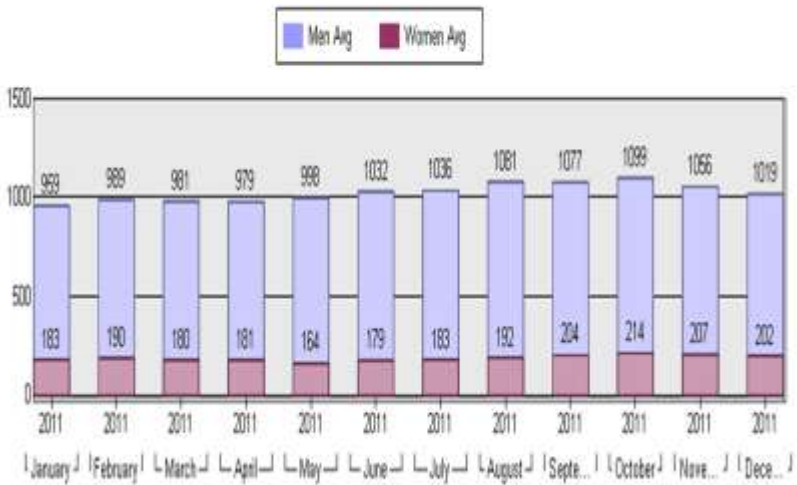
Inmates by Offense Type



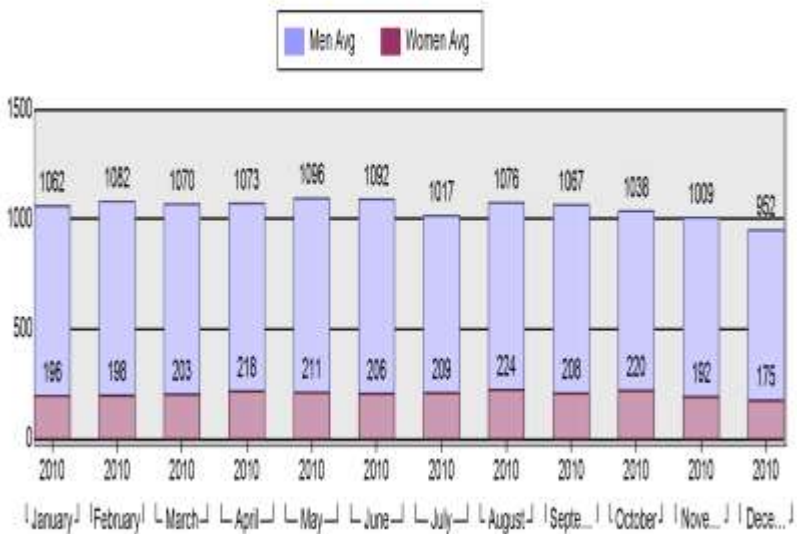
Inmates by Offense Type



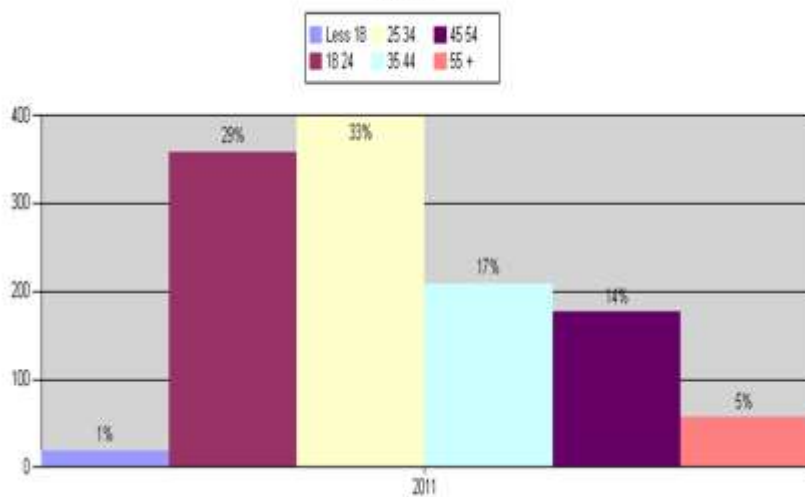
Gender Profile



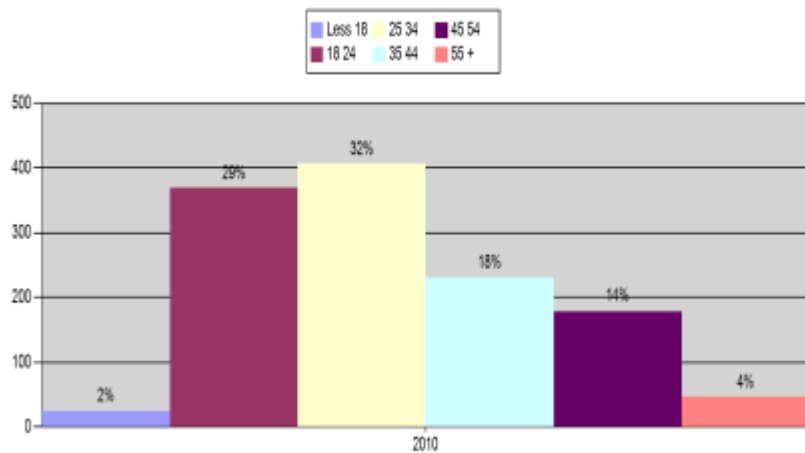
Gender Profile



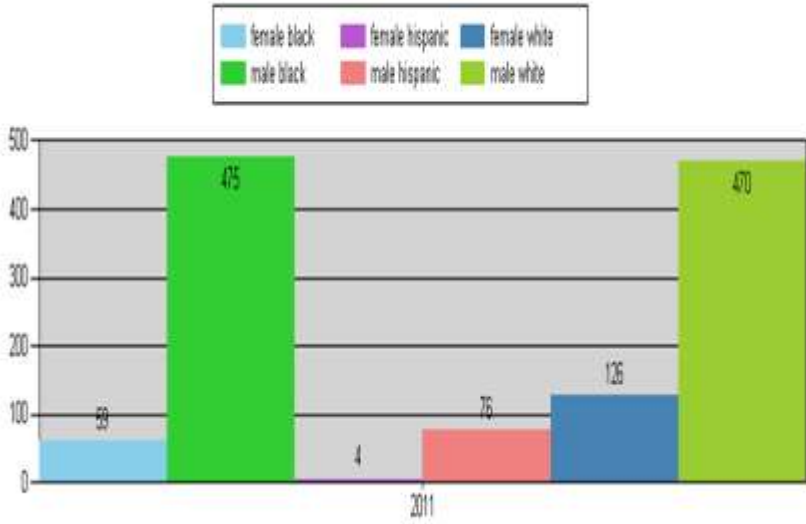
Age Profile



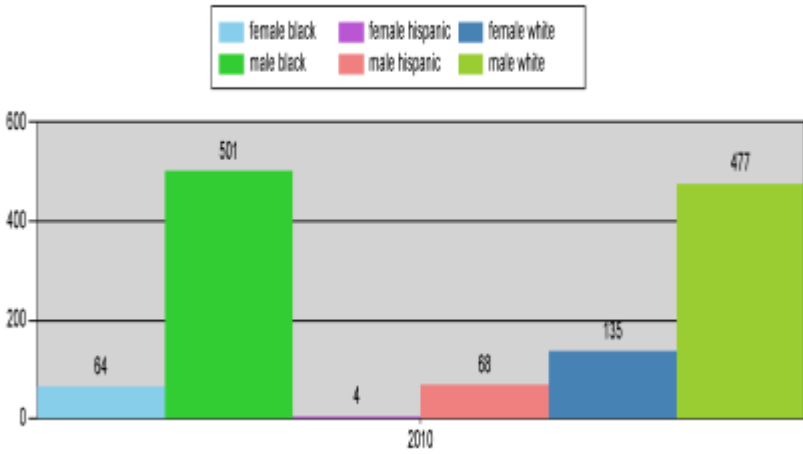
Age Profile



Race Profile - Averages



Race Profile - Averages



Court Performance Metrics

Age of Pending Caseload

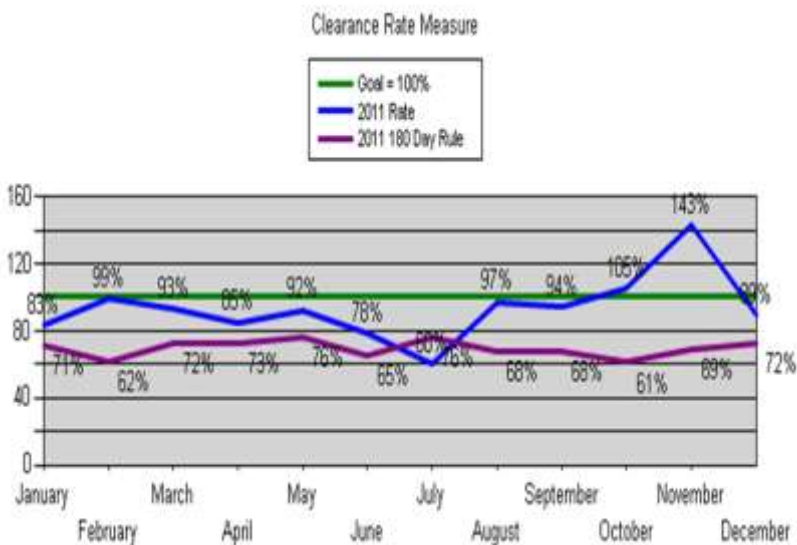
<u>Age Category</u>	<u>Total Cases</u>
1 - 149	755
150 - 180	123
181 - 210	127
211 - 240	110
241 - 270	80
271 - 300	80
301 - 365	123
1 - 3 years	522
3+ years	5505
Total:	7425

A. 3+ year

Cases in this category date from 1974 to 2008. They are comprised of a large backlog of closed cases that remain open due to docketing issues , outstanding fees, or cases with outstanding warrants.

B. 1 - 3 years

Approximately 33% of cases are in a 'Reop' or reopened status. This category is primarily made up of violation of probation cases.



This graphic shows the effect of the clerks' office during 2011 taking a more active position in closing out old cases. Cases that remained open for years due to the collection of fees for example are having hearings scheduled to remove them from the pending case list.



County Attorney
Criminal Justice Division

Fort Pierce, Fl. 34950

Official Business