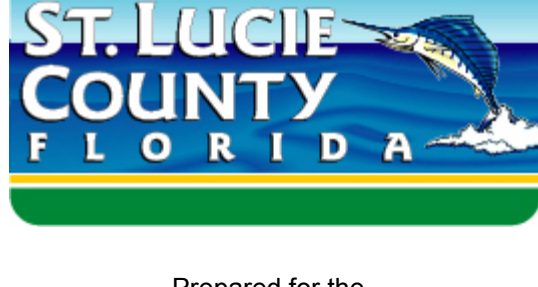


St. Lucie County Criminal Justice System

Detention Center Population Report

For Year: 2008



Prepared for the

Public Safety Coordinating Council

2300 Virginia Avenue
Ft. Pierce, FL. 34982

By

The Office of the Criminal Justice Coordinator
Mark Godwin

Purpose

The Detention process in St. Lucie County is a complex operation, Laws, court decisions, Federal and State rules, accreditation standards and the U.S. Constitution all combine to provide operational mandates.

To assist in this responsibility, the office of the Criminal Justice Coordinator has established an ongoing review and assessment of the volumes of statistical data the sheriff's office maintains.

This material offers a road map of sorts, sharing complied information to assist in the operational planning for the future.

The Criminal Justice Coordinator will continue to monitor the jail population to keep you informed of any significant trends or changes in the underlying population.

This report contains specific, detailed information regarding the incarcerated population of the St. Lucie County Detention Center.

Table of Contents

Methodology.....	4
Annual Population Summary.....	5
Inmate Release Summary.....	9
Inmate Booking Summary.....	12
Average Length of Stay Analysis.....	14
Inmate Demographics.....	17
VOP Inmate Analysis.....	19
Court Performance Metrics.....	22
Economic Factors Affecting Inmate Population	26

Methodology

This is the 2008 edition of the St. Lucie County Jail System Annual Population Report. The report contains statistics for the year 2008/2007.

Most of the data for the statistics come from 3 sources.

- 1: Daily population report
- 2: Data entered into the Sheriff's Office computer jail inmate tracking system
- 3: Data extracts from St. Lucie County Circuit Court database

For the jail population, all of the statistics presented here are based on actual counts rather than on sampling, thus eliminating sampling errors.

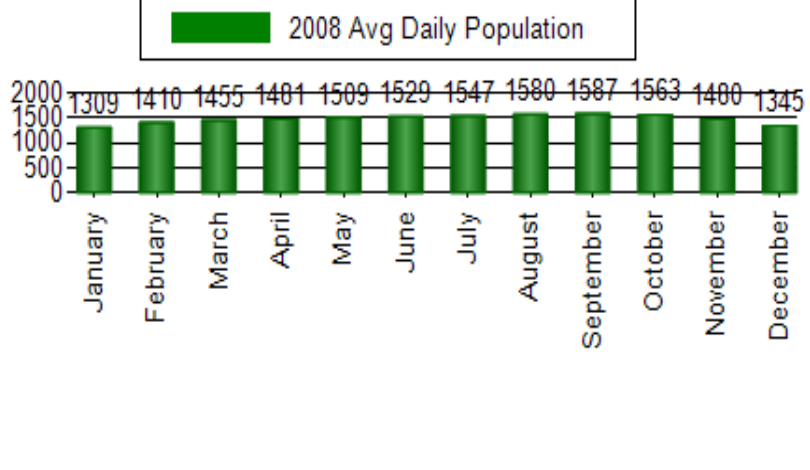
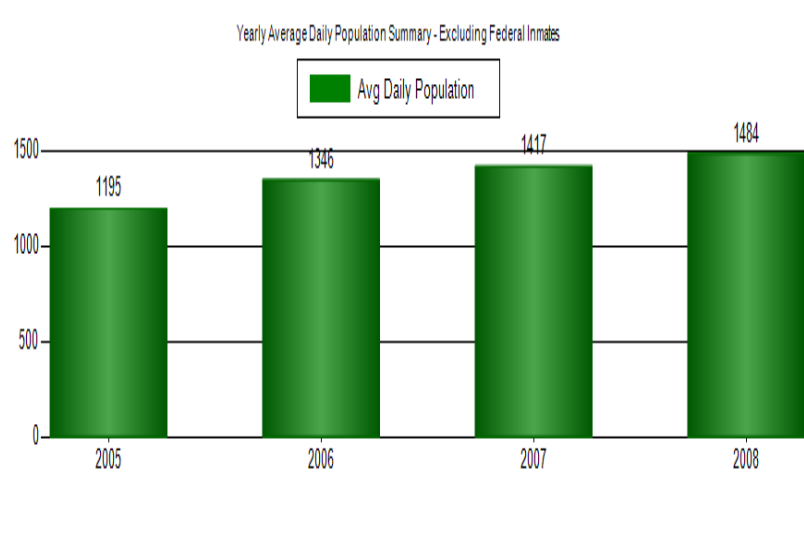
A **booking** is the admission of a new inmate into the jail. If an inmate is fully released and then comes back to jail, that counts as a new booking. Hence when the number of bookings is given for a year, the same inmate will be counted as many times as he/she is booked. An inmate may similarly be **released** several times in a given period.

A daily population count records every inmate in jail exactly once at the time of the count. An inmate count is conducted every day at midnight and it is used as the official figure for the number of inmates in jail on the preceding day.

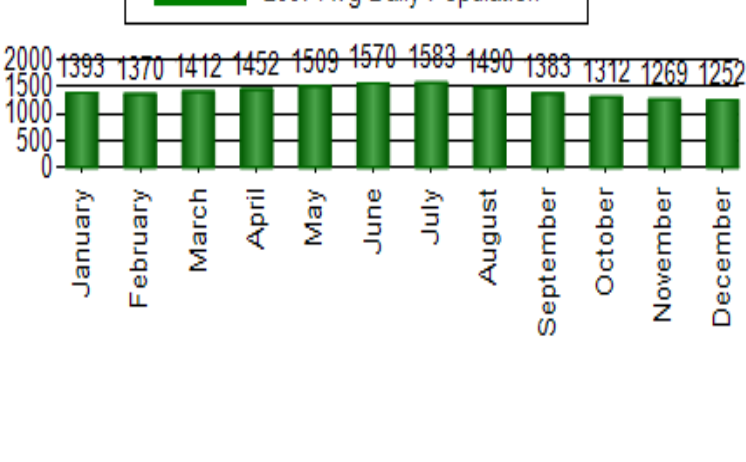
Two conventions employed in this report involving inmates with multiple charges should be noted. One is that, when citing statistics about inmate charges, the most serious charge is used. The other is that inmates with multiple charges are counted as sentenced if, and only if, they are sentenced on every charge.

Population Summary

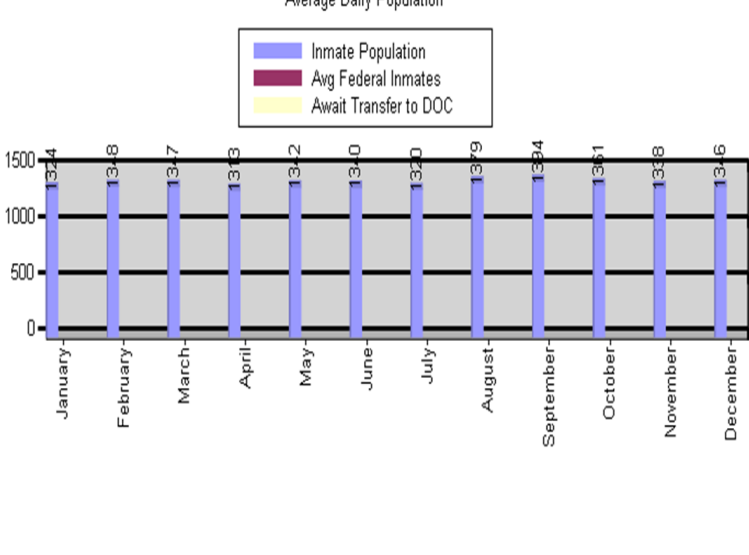
This graph shows the average daily jail population by month for the period 2005 through 2008.



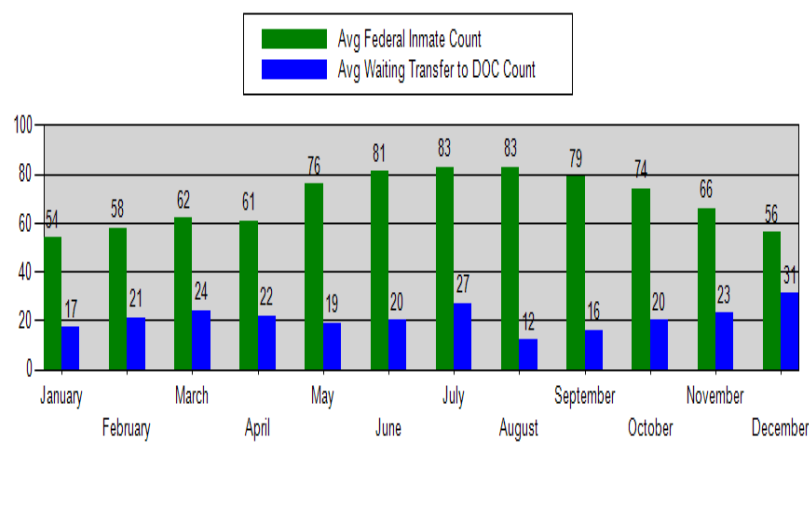
2007 Monthly Average Daily Population Summary - Excluding Federal Inmates



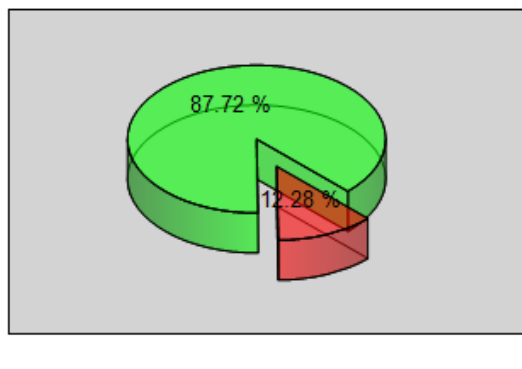
2006 Avg Daily Population



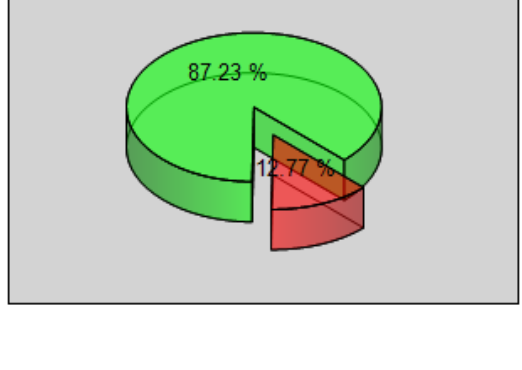
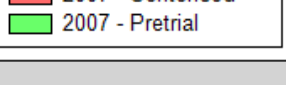
2008 Misc Population Summary



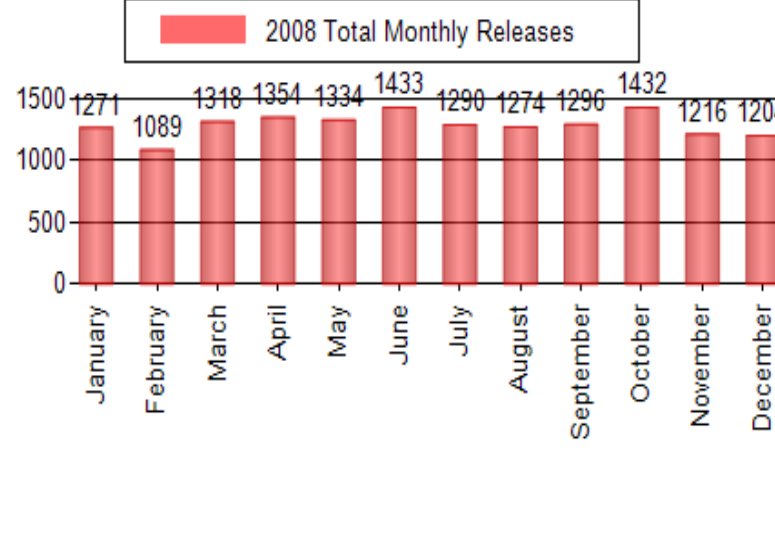
Inmates by Charge Status



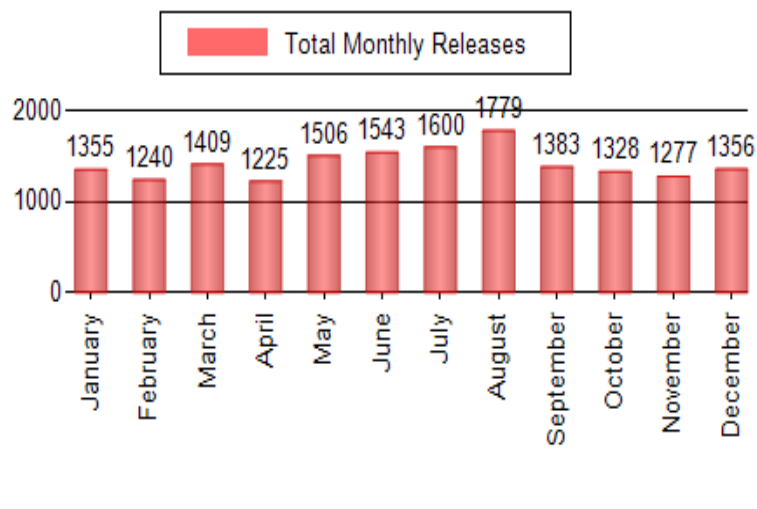
Inmates by Charge Status



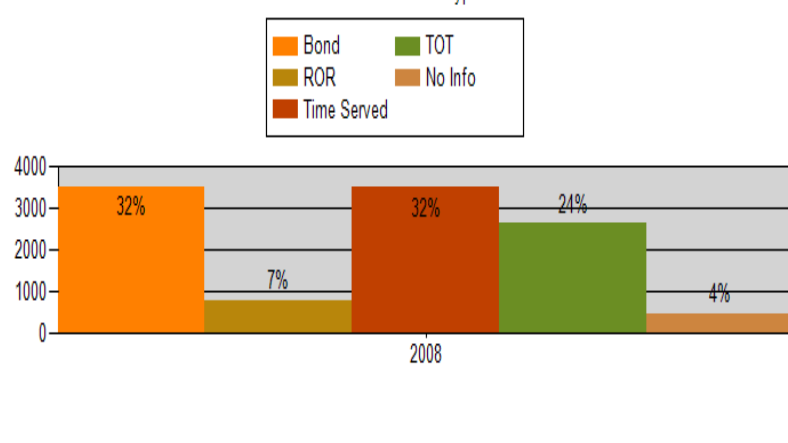
This graph shows the cumulative level of inmates released by month for the period 2005 through 2008.



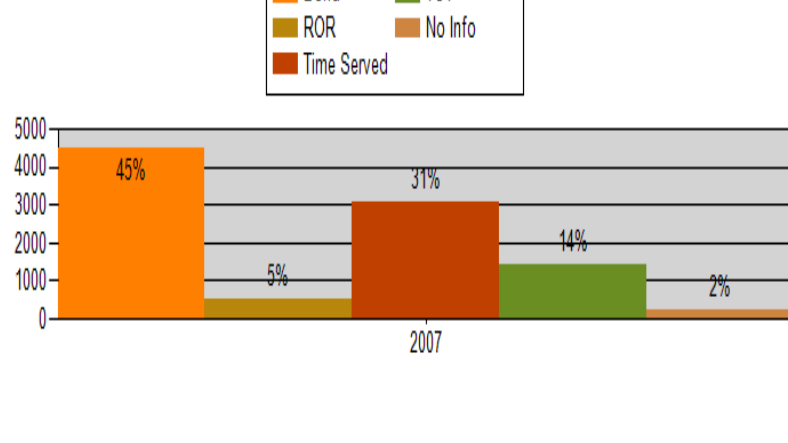
2007 Monthly Total Release Summary



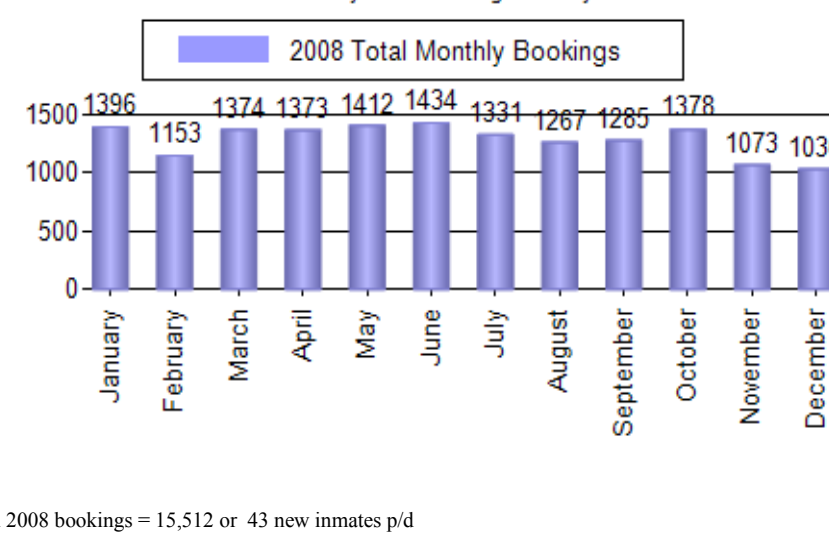
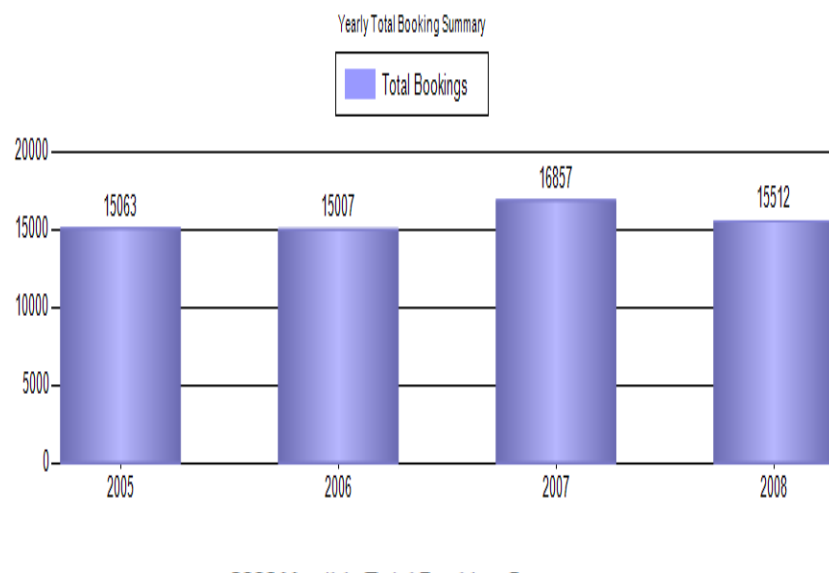
Current Year Release Types



Current Year Release Types

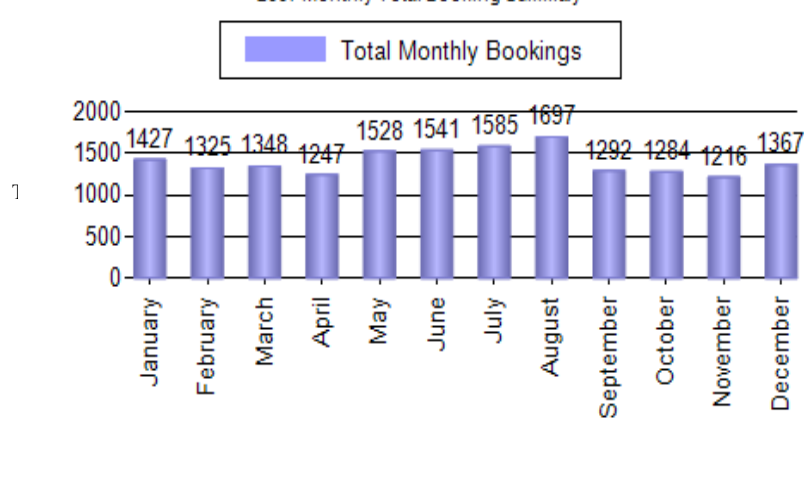


This graph shows the cumulative level of inmates booked by month for the period 2005 through 2008.



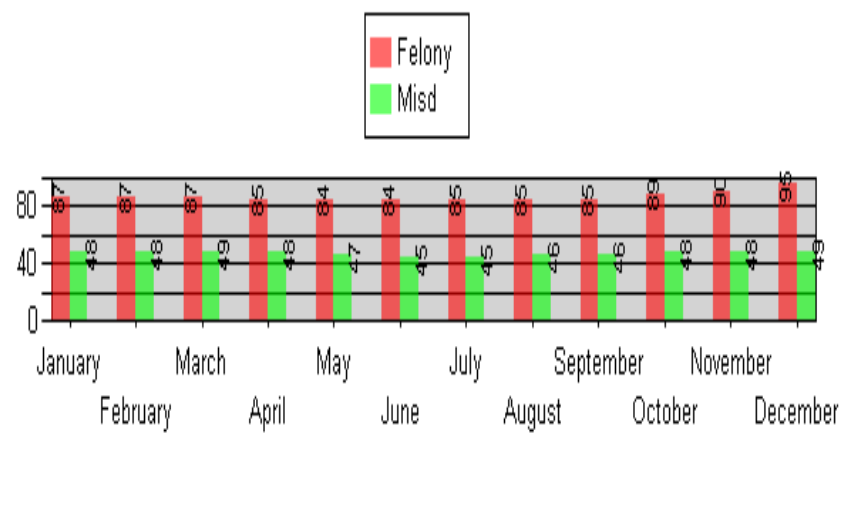
Total 2008 bookings = 15,512 or 43 new inmates p/d

2007 Monthly Total Booking Summary



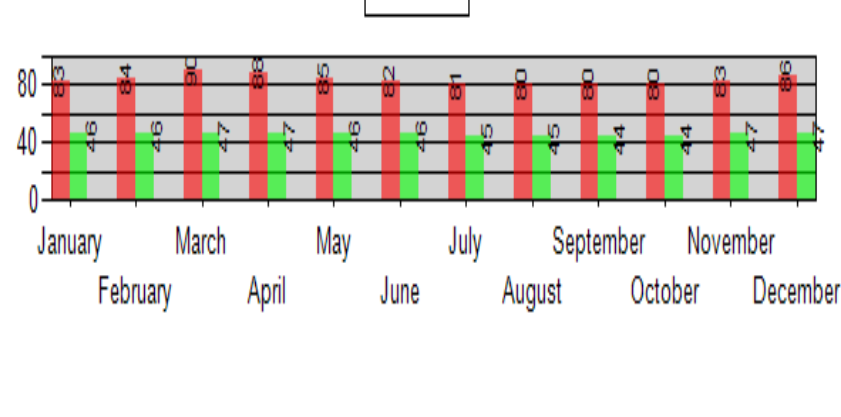
2008 ALOS:

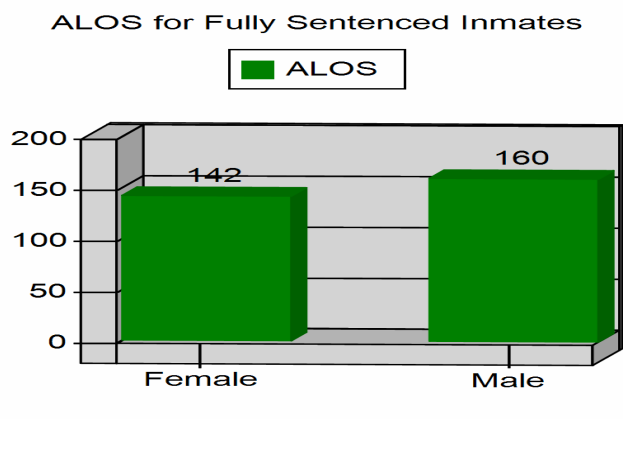
Average Length of Stay - Source - Jail Classification Report



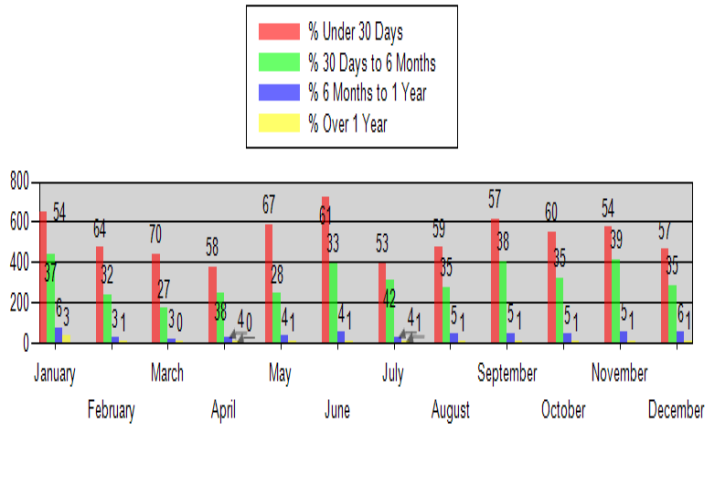
2007 ALOS:

Average Length of Stay - Source - Jail Classification Report



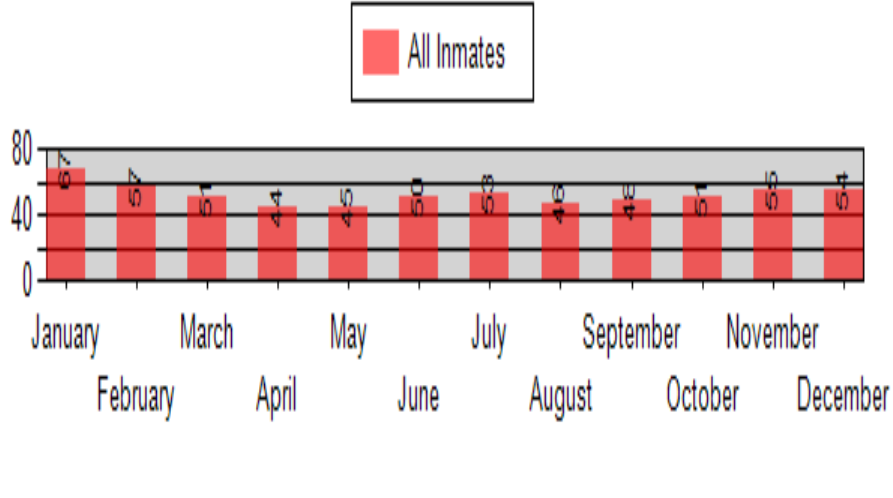


2008



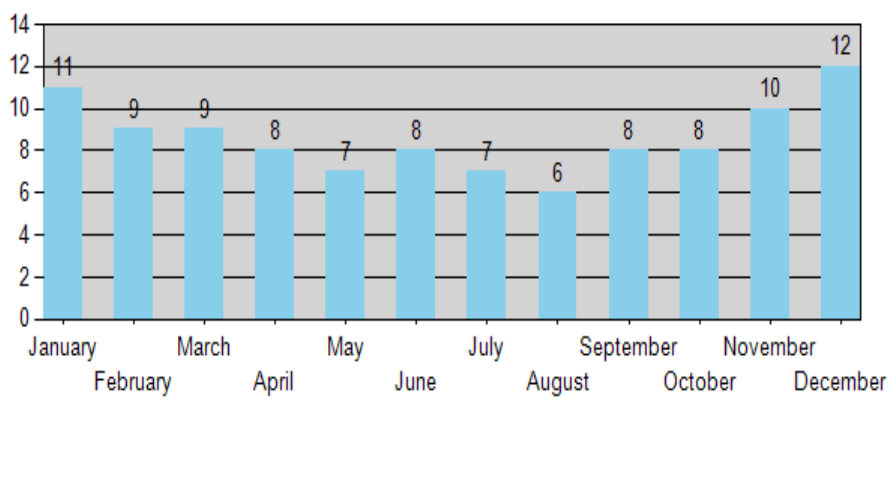
2008

Average Length of Stay - Combined - Data Derived from Jail Daily Release Report

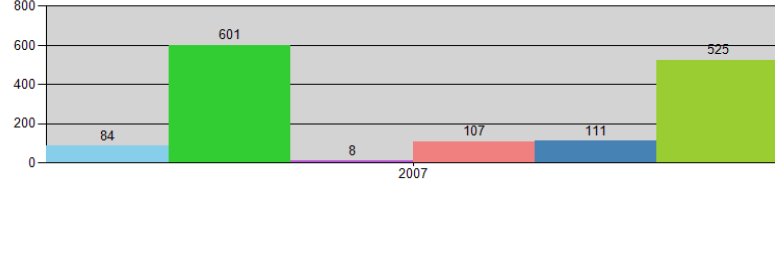
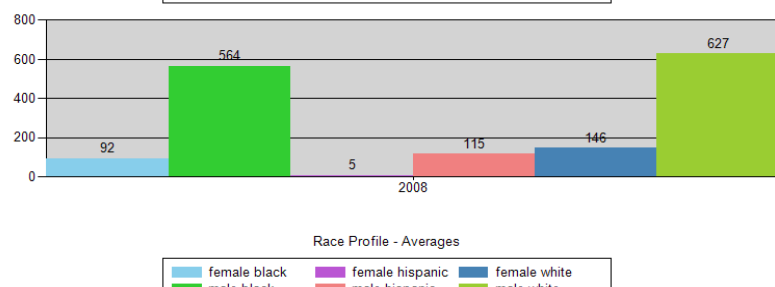
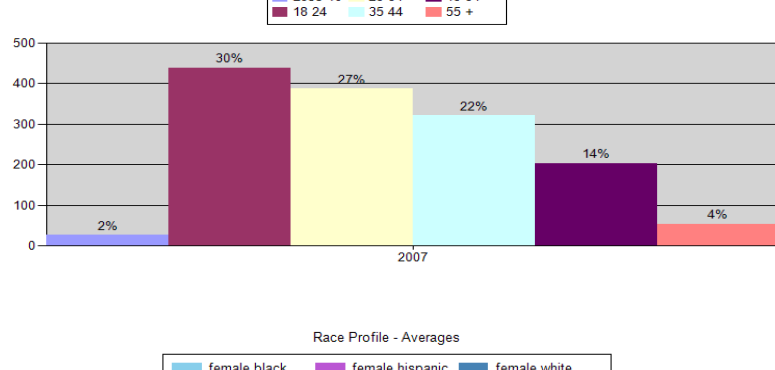
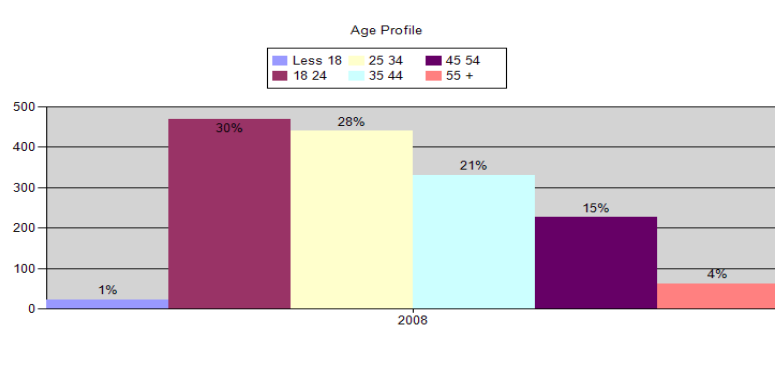


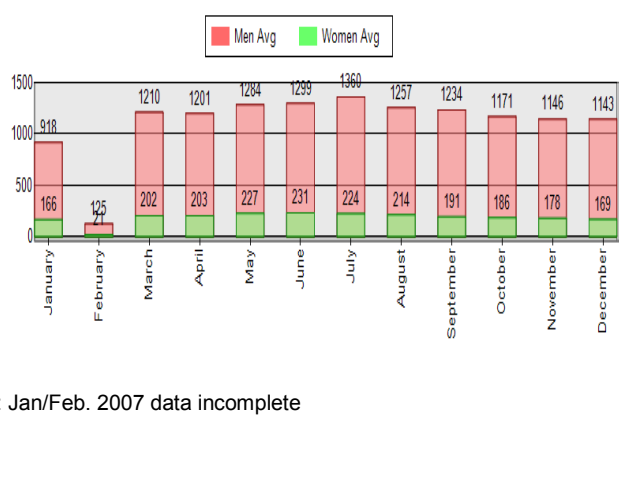
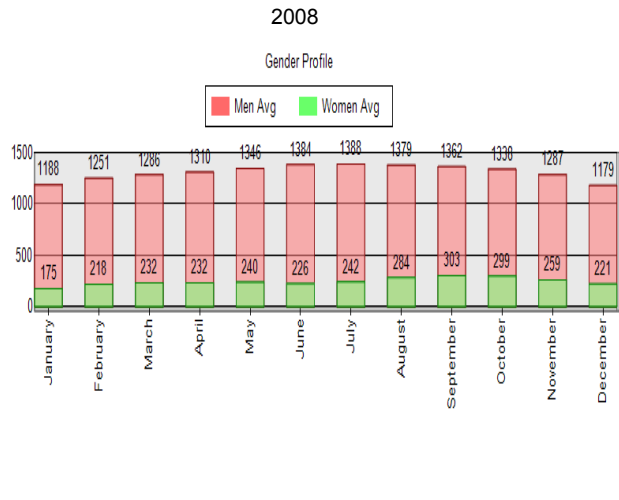
2008

ALOS from Booking to Bond



Demographic Analysis

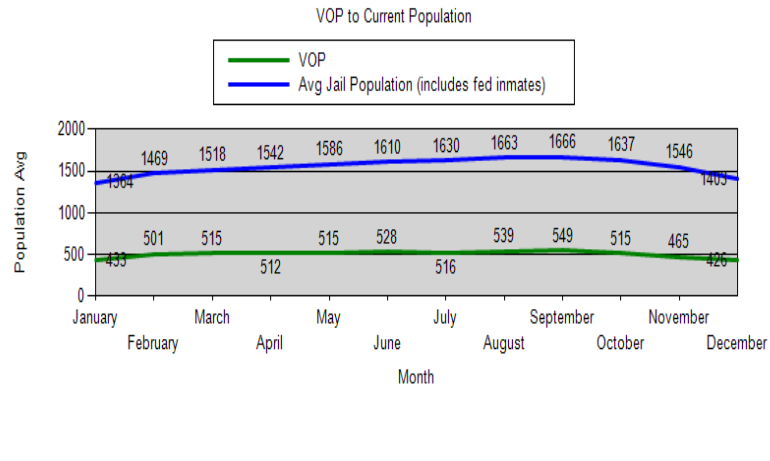




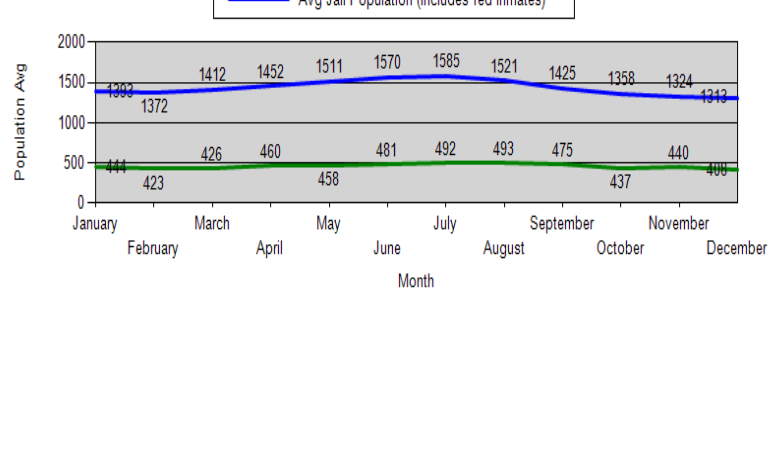
Note: Jan/Feb. 2007 data incomplete

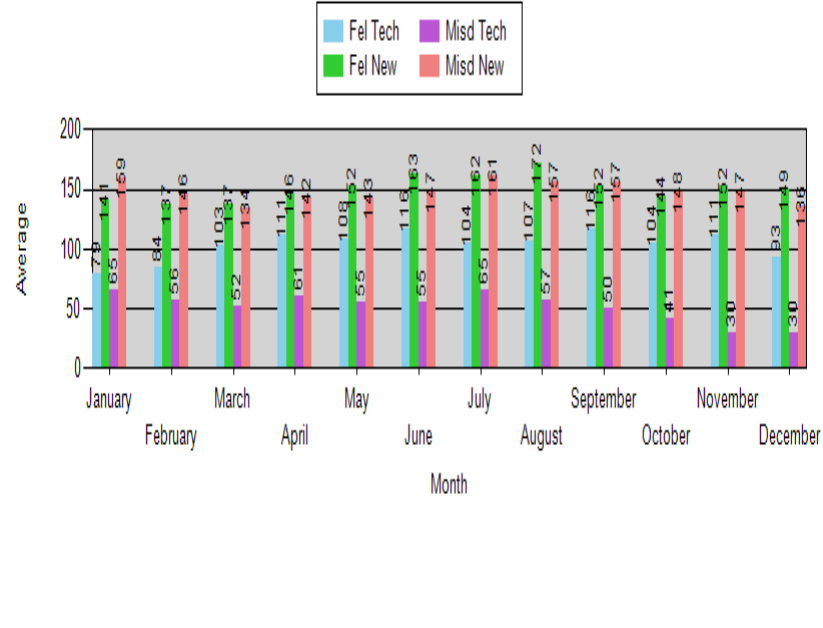
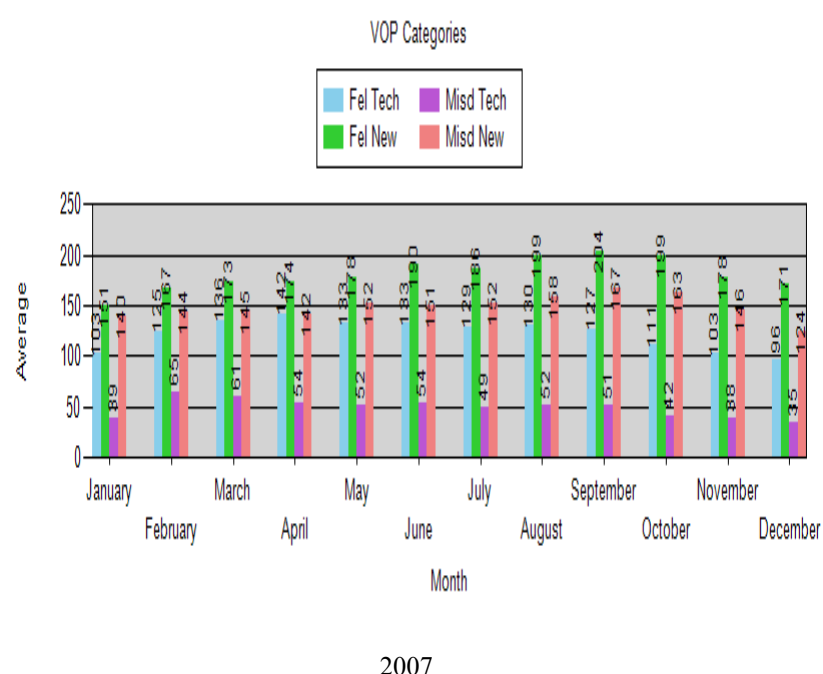
Violation of Probation Inmate Summary

2008



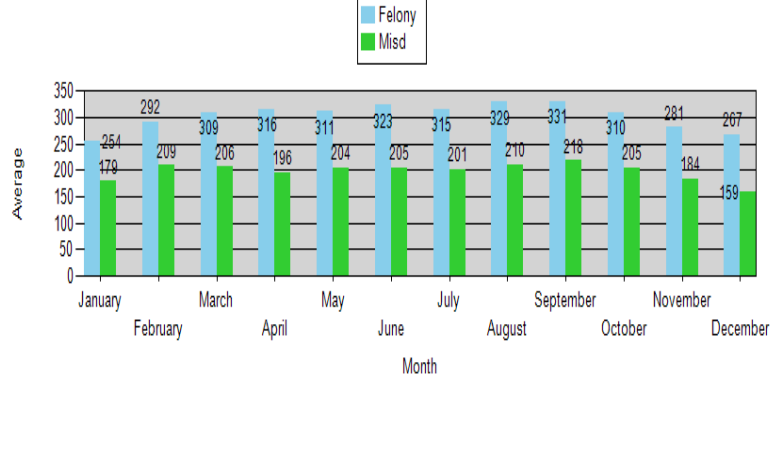
2007





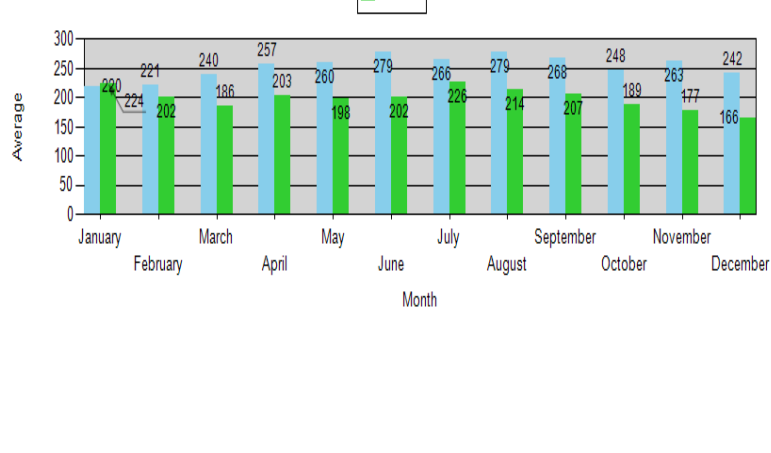
2008

Average VOP Population



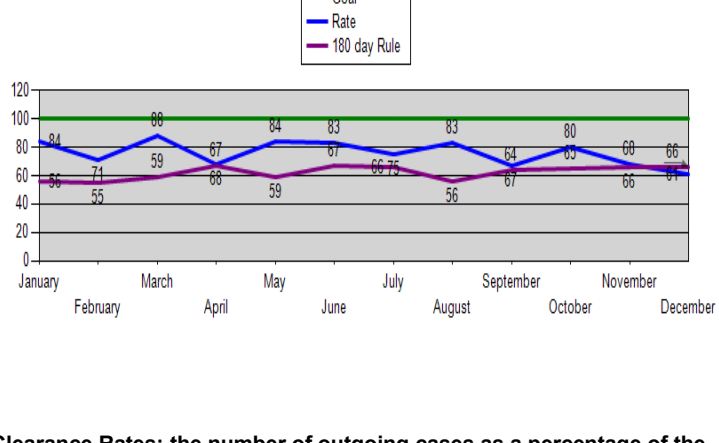
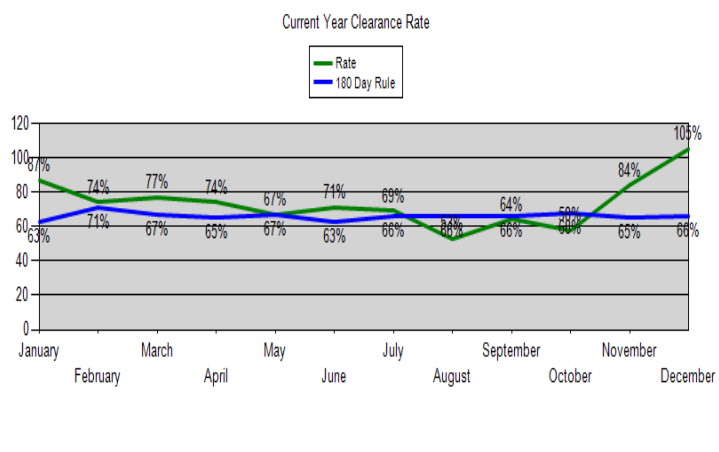
2007

Average VOP Population



Court Performance Metrics

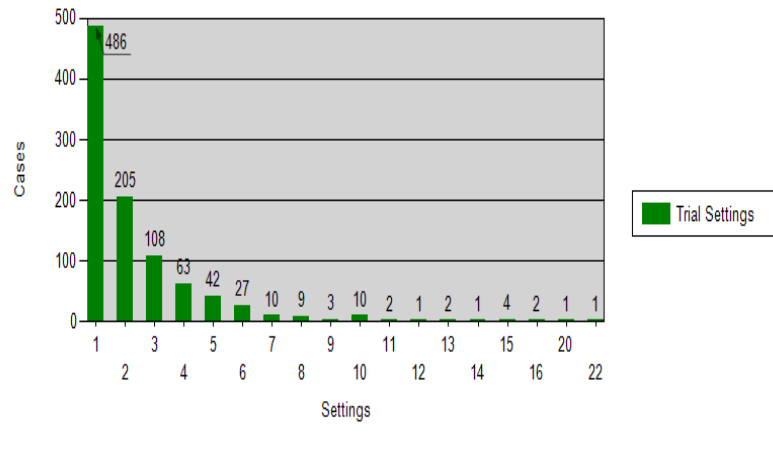
2008



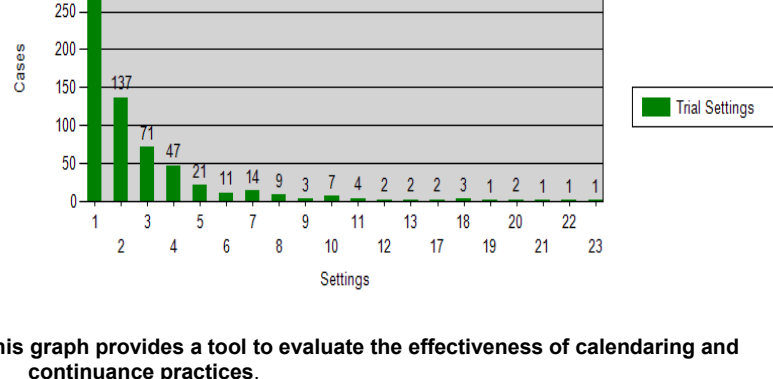
Clearance Rates: the number of outgoing cases as a percentage of the number of incoming cases.

Measures whether the court is keeping up with its incoming caseload.

2008



2007



This graph provides a tool to evaluate the effectiveness of calendaring and continuance practices.

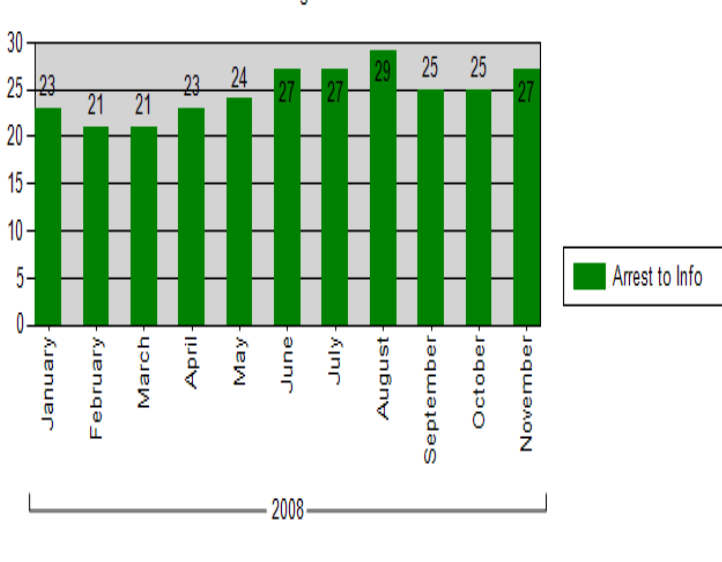
Court Performance Metrics

Court Performance Statistics						
Year	Arrest to Disposition	Arrest to Filing of Information	Filing of Information to Arraignment Hearing	Arraignment to Disposition	Trial to Disposition	
2004	131	35	23	188	167	
2005	152	36	22	185	147	
2006	142	37	27	188	124	
2007	97	25	21	120	179	
2008	71	24	25	86	56	

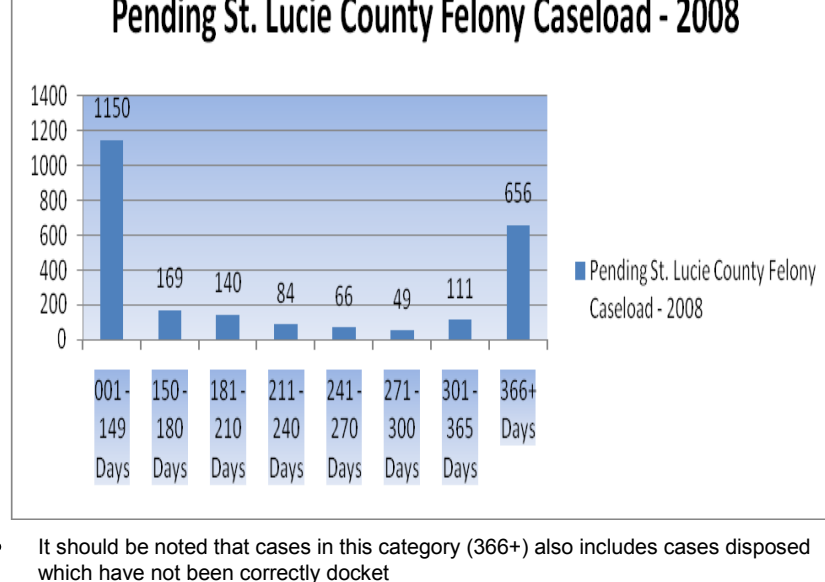
Numbers are expressed in average per day. Also note, the average for arrest to disposition, arraignment to disposition and trial to disposition is based on cases that have been **disposed** and does not reflect the time variances of **pending cases**.

Therefore, as cases are disposed, the averages above will change to reflect the intervals for those additional cases.

Arrest to Filing of Information - Current Year



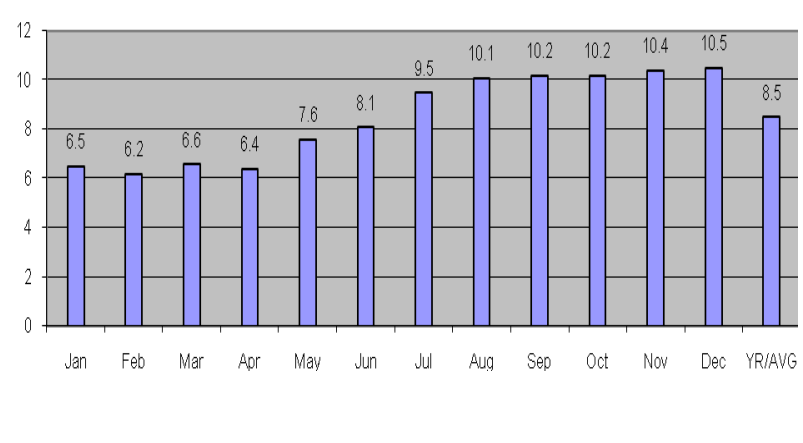
Aged Pending Cases Analysis



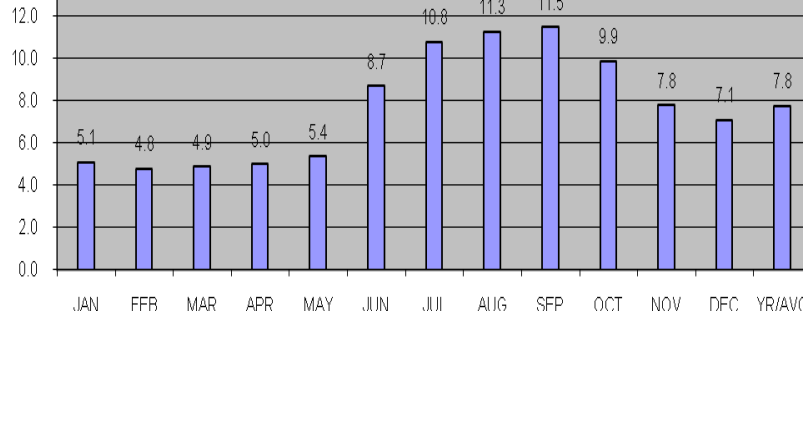
- It should be noted that cases in this category (366+) also includes cases disposed which have not been correctly docket
- by the clerk's office. Total pending cases as of 12/30/2008 were 2,425.

Source for unemployment figures: Agency for Workforce Innovation

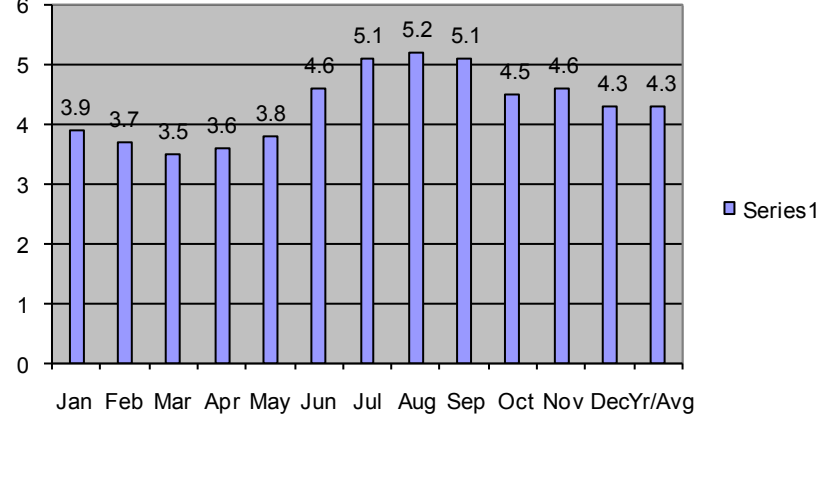
2008 County Unemployment Statistics



2007 County Unemployment Statistics



2006 County Unemployment Statistics



County Attorney
Criminal Justice Division

Fort Pierce, Fl. 34950

Official Business